

Dikey Engineering

*“Where Professional Experience
and
Service Quality Meet”*



Company Profile

DIKEY ENGINEERING ELECTRIC ELECTRONICS CONSTRUCTION TOURISM FOOD INDUSTRY. VE TİC. LTD. Sti. has the excitement of sharing the knowledge and experience it has with you, our esteemed customers, since the day it was founded it has achieved success in the AUTOMATIC DOOR industry. From the first moment it established, in a short time got recognized for the importance to quality and determination to achieve the difficult by never abandoning its principles. Our company's unchangeable principles have always been quality, service, timely delivery and fair prices.

DIKEY ENGINEERING ELECTRIC ELECTRONICS CONSTRUCTION TOURISM FOOD INDUSTRY. VE TİC. LTD. Sti. Garage Doors, Industrial Doors, Hangar Doors, Loading Systems, Barrier and Park Automation, Garden Door Automation, Photocell Door and Radar Door Systems, our company continues to operate with a wide range of products and services to you with innovative understanding. Our service concept; We stand by you not only until the sale of the product is done, but after the sale keep standing by you with technical support.

DIKEY ENGINEERING ELECTRIC ELECTRONICS CONSTRUCTION TOURISM FOOD INDUSTRY. VE TİC. LTD. Sti. as a company that continuously develops and renews itself in line with its mission and vision, it continues its activities within the framework of honest working principles.



Our Vision:

Is to be a respected and leading corporate company by providing continuity in automatic doors and barrier system in the industry, not only in Turkey but also abroad, as the first choice of customers with service and product quality.

Our Mission:

Our aim is to meet the expectations of our employees and customers at the highest level in accordance with the legal and ethical principles, offering the most appropriate solutions and price suggestions by understanding the needs and expectations of our customers in the best way.

Our Values:

We are a customer-oriented, honest and transparent company that believes in teamwork, supports the development of its employees, is creative and innovative and sensitive to the environment and society.

Our Strategic Goals:

Our company aims to carry the sectoral knowledge and experience gained in the automatic door and door automation sector to the future and to strengthen its leading and decisive position in the sector.



Group Structure

Petro/TEK

Electrical and Instrumentation



Design and Mechanical



Calibration and Testing

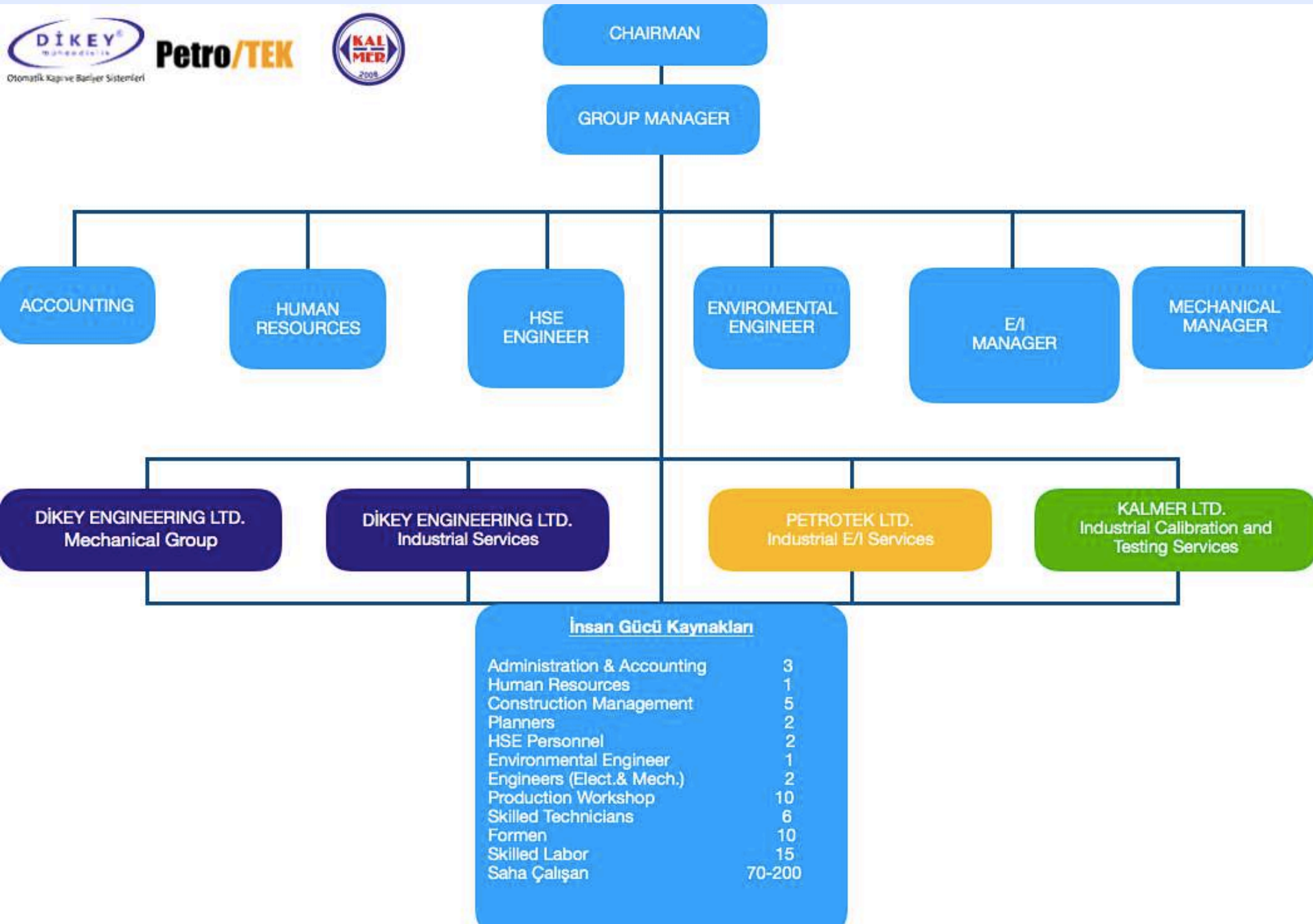
**Provides Full Service
Engineering, Construction
Maintenance and
Fabrication**

Group integrated services allow Dikey Engineering Ltd. Company to manage every aspect of a complex work scope or project, including project management, planning, design and engineering, material procurement, equipment testing, installation and commissioning. Ongoing maintenance is delivered by multi-skilled project teams.

Group Company Structure



Petro/TEK



Our Products

Garage Doors



- In the event of a sudden rain or storm, you can quickly and safely place your car in your garage.
- In addition, the light unit in our systems will illuminate the garage and make the entrances and exits more comfortable and safe.
- These systems can operate at voltages such as 220 V AC and 24 V DC, which makes the operation of the system even safer.

Dock Shelter Systems



- It provides fast loading and unloading preparation with its flexible rubber sidewalls and scissor system.
- In textile, pharmaceutical and food industries, maintaining indoor conditions in enterprises where hygiene, heat and humidity ratios are sensitive is important. The Dock Shelters are very successful in doing this

Shutter Systems



- Automatic roller shutter systems are produced as galvanized steel, aluminum pull, aluminum polyurethane and steel polyurethane.
- The profiles are completely closed, with windows and micro-holes. Shutters are produced in desired dimensions in accordance with the door and window opening of the building.
- It is very useful for workplace safety and has good aesthetics. Optional button, remote control, card access and password access options are available.

Features of Aluminum Shutters

- Aluminum shutters are manufactured from extruded profiles as double-skinned.
- Each of the profiles that make up the shutter is drop-shaped and operates in special plastic coverslip adapters which are fixed with hair screws.
- Plastic coverslip adapters are made of frictionless and resistant to all kinds of natural factors.
- With special adapter accessories, roller shutters are able to move in both directions at a total angle of 180 °.
- Fully rotatable lamellae are bonded to each other with plastic seals in both directions, making the light impermeable and the lam dark.
- Aluminum shutters are easily controlled by hand with special plastic accessories designed for opening and closing and turning the lamella angle. They are long lasting and maintenance free.
- It can be produced in any size, can be painted in desired RAL color or wood pattern.
- Automatic roller shutter systems are used in business centers, store entrances, factories and building entrances.
- Automatic shutter systems are the most important security measures.
- Aluminum shutters are manufactured from polyurethane filled and extruded (hollow double walled) pallets.
- In the rolling shutter systems, movement is given to the system with remote controlled motors.
- If required, UPS (power supply) systems can be installed in rolling shutters.
- It is not possible to open the shutter systems by lifting from the bottom thanks to the hanger locks.

Photocell Doors



- It offers fast, aesthetic and economic solutions that facilitate daily life in many buildings such as stores, markets, and apartments.
- Both domestic production and imported brands. Two-year parts and technical service are guaranteed.

Hangar Doors



There are more than one type of hangar doors with different structures depending on the location.

- Folding doors
- Motorized sliding doors of each wing
- Telescopic hangar doors are some of them.

The hangar doors use a very large area; They are designed to provide air insulation and keep out dust from outside. It is also possible to choose the material that can adapt to the building front for the hangar door closing panel.

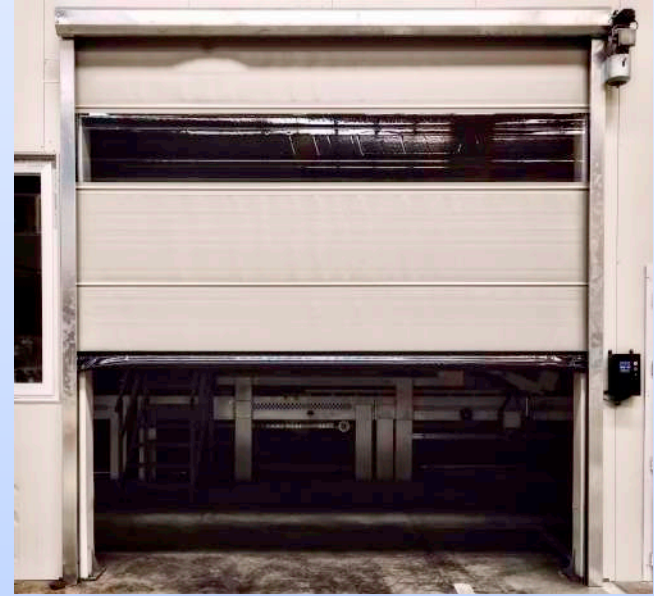
Barrier Systems



- It provides ease of use in highway entrances, industrial facility entrances, car park entrances, site and apartment entrances.
- With the safety photocell during the closing movement of the door, the handle automatically stops and opens when any object enters the protection area.
- With the remote control system, users can open and close the door easily and safely without leaving the vehicle.

- - Works at 10 C + 55 C.
- BFT brand motor are used. Two-year parts and technical service are guaranteed.

Tarp Systems



- They are highly successful solutions where there are heavy vehicle, forklift or pedestrian traffic and where indoor weather conditions are required to be effected to the minimum level from outside environment.
- It is guaranteed to reduce dust, moisture, noise and image pollution caused by continuous opening and closing of the door and to increase productivity in enterprises.
- They can work both outdoors and indoors throughout your entire working time.
- Has high speed PVC roller (indoor) or folding door (outdoor) and extremely durable motor with reducer systems.

Turnstile Systems



- Together with the turnstile system, products such as smart card readers, fingerprint readers, encrypted entry device, face recognition device, handprint reader device can be used as control device.
- The main product of access control systems is access control software. With this software, personnel identification, personnel grouping, personnel authorization operations are performed. In addition, detailed reports can be obtained on the basis of all departure points.
- Two-year parts and technical service are guaranteed.

Iron Garden Doors



Industrial Doors



- Industrial doors are durable and long-lasting door solutions that can be obtained at high performance in the entrance and exit of different industrial buildings and loading places.
- Sandwich panels forming the main body of the door systems, thanks to the high insulation coefficient polyurethane injected between the sheet metal, minimizes the energy loss of the applied areas and provides heat saving.
- With ramps and Dock Shelter Systems applied together with door systems, safe loading and unloading can be carried out smoothly. Industrial doors are produced in desired dimensions in accordance with the door opening of the structure.

Strip Curtain Systems



Thanks to the flame retardants in their composition, fire-resistant PVC strip doors can be used in booths, cabin or welding rooms. In case of a need to keep them open long, the door can be manually raised to one side.

Applications and advantages:

- Protect the environment from external influences
- Moisture isolation
- Sound insulation
- Thermal insulation
- Bird, insect
- Powder
- Noise
- Solar Lights
- Easy to apply
- It is modular
- transparent
- Easy to refresh
- Easy to clean
- Late flammable
- Does not spread flame
- Saves energy
- Switch at any point

Accordion Barrier



- The frequently preferred accordion barriers are very easy to carry with its aesthetic appearance and easy usage.
- It has modules that can be added to each other and provides the opportunity to obtain the desired length.
- Accordion barriers that provide fixed or mobile usage are resistant to overturning.
- Can be used indoors and outdoors in all weather conditions.

Mushroom Barriers



- Shock and weather resistant Hydraulic Mushroom Barriers are manufactured from stainless pipes with advanced technology.
- The diameter and height of the barriers vary depending on the requirements of the area or the desired level of security.
- Thanks to its electronic feature, the upgrade / lowering process can be controlled by any type of card reader, remote control, biometric readers recognizing fingerprints, automatic plate recognition system or any access control system, even with a simple control button. In addition, the system; safety accessories such as magnetic loop detectors, photocells, flashing lights or red / green traffic lights can be easily integrated.

Fast Rolling PVC Doors



- Fast PVC Doors that allow personnel to work quickly, safely and comfortably; It protects the indoor environment from unwanted materials such as dust, dirt and moisture that may come from outside.
- Another advantage of rolling shutters is that it saves energy by keeping heat loss to a minimum. It is especially in demand by cold storage.
- The tarpaulins used in these doors stretch against impacts and increase the durability of the door.
- Canvas tears can be repaired in a short time and at reasonable prices, so they do not adversely affect businesses.

Guillotine Glass Systems



- Motorized, remote controlled, moving handrail system.
- It is intensely preferred for closing and opening the spaces. As a moving handrail system; cafe, hotel, restaurant, stadium and so on.

Roller Shutter Systems



- They are mono-block shutter systems that do not overflow on the exterior of the building and are applied on windows.
- Lamination options, aesthetic appearance and functionality offers solutions to meet your architectural and decorative expectations.
- In addition, it is a system that provides necessary sound and heat insulation and keeps out unnecessary dust and dirt out.

Trap and Bump



- It is among the security systems used to eliminate unwanted situations that may occur.
- Above Ground Trap System is made of 7mm steel material and is suitable for passage of 180 tons of vehicles.
- 50 cm modules can be arranged side by side and the desired length can be closed.

Telescopic Doors



- Telescopic doors take their names from the telescopic movement of the wings, which are the working mechanisms, sliding over each other.
- Areas that need photocell automatic sliding doors standard practice but some places do not provide a convenient opening form, so the method of increasing the number of movable wings.

Rotating Doors



- Revolving door systems may be preferred where interior control is desired to meet elegant aesthetics.
- It shows excellent suitability for installation. In addition, the desired security, heat permeability and dust pollution permeability can be minimized.

Hermetic Doors



- Hermetic doors, which are used in specific application areas such as operating theaters, laboratories and even recording studios that require sealing, close with full contact on the wall and floor and meet the air tightness requirement at the desired level.

Pergola Systems



- Winter garden, hotels, restaurants, cafes and patisseries use a wider area the product is produced according to needed length, width and height.
- It is designed not to damage the architectural appearance in the outdoor areas.
- Our Pergola products are produced from aluminum profiles. System and led lights can be controlled by remote control ...

References



Contact Us

Head Office

Address: Hürriyet Mahallesi 1792 Sokak Özgüzel Apartmanı, Kat:1 D:1, Yenişehir / Mersin

Phone: (0324) 325 34 49

E-mail: info@dikeymuhendislik.com.tr

Facility

Address: Tırmıl Sanayi Sitesi, Çilek Mahallesi, 63129 Sokak, No:37 Blok:1/2 AKDENİZ/MERSİN

Phone: (0324) 234 84 30

E-mail: info@dikeymuhendislik.com.tr

